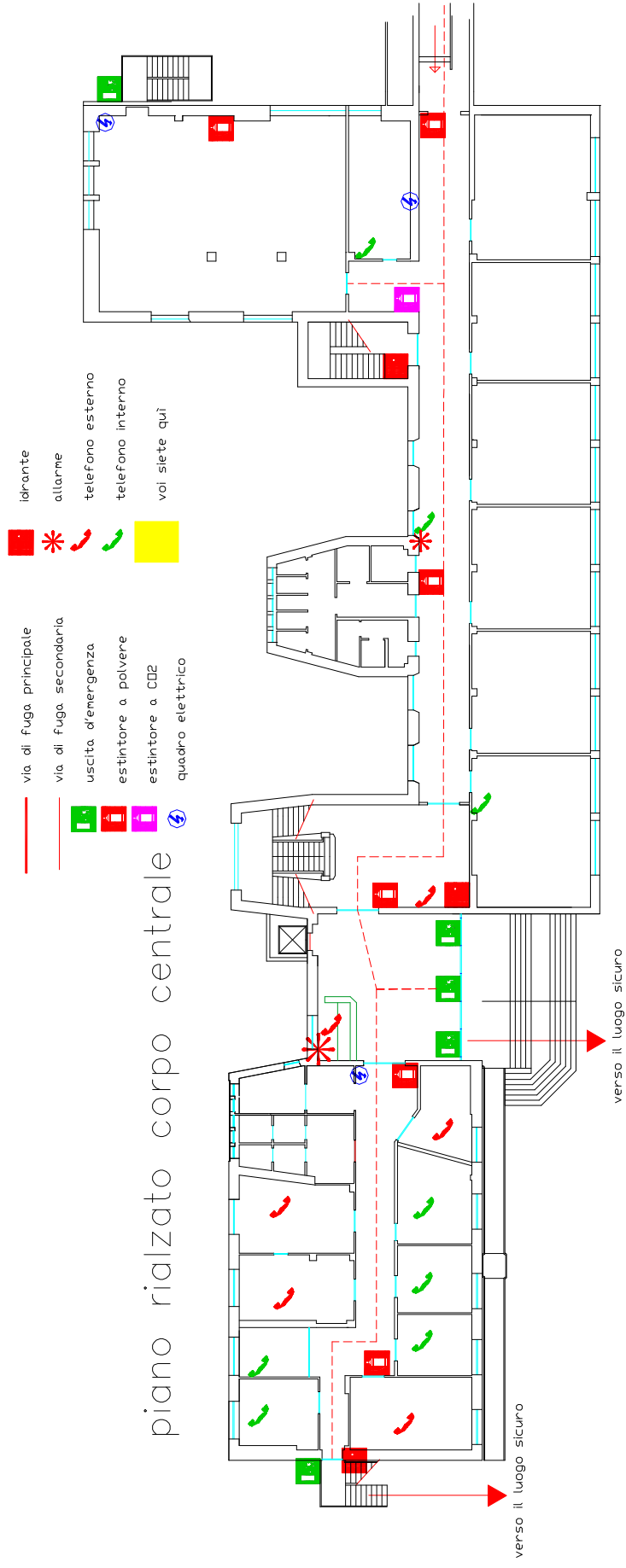
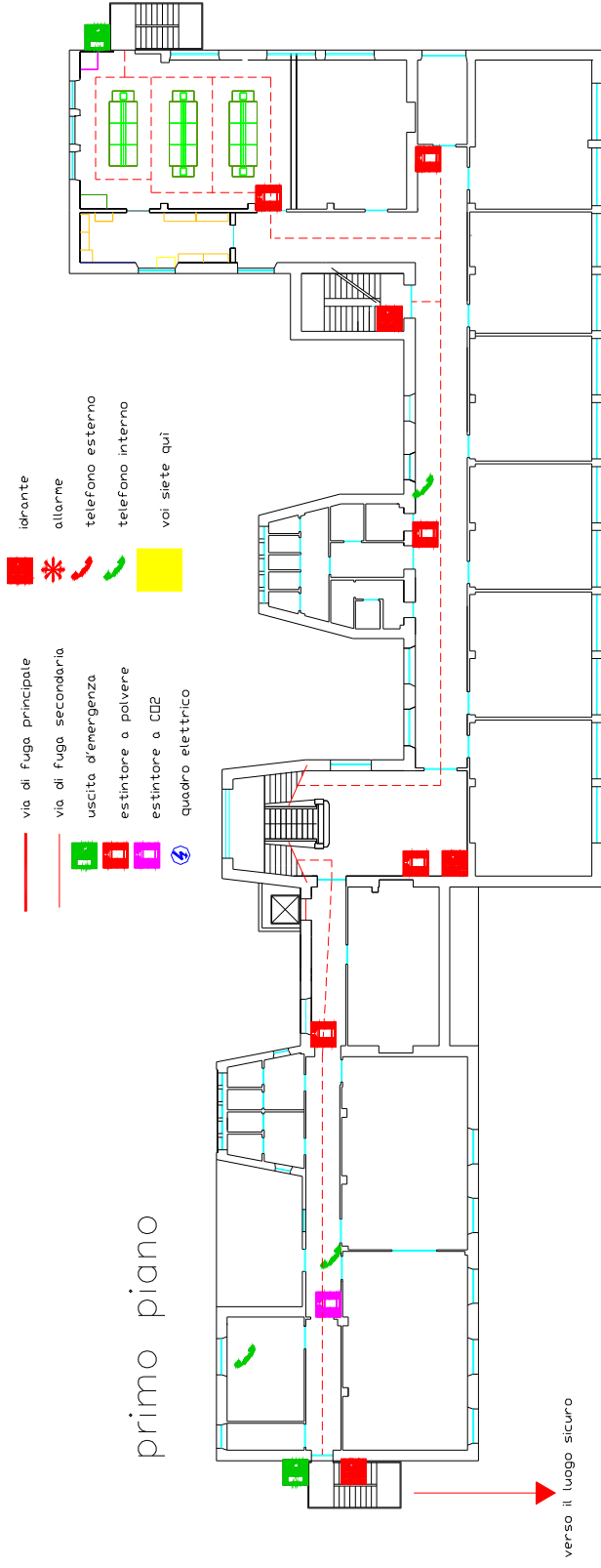


# piano rialzato corpo centrale

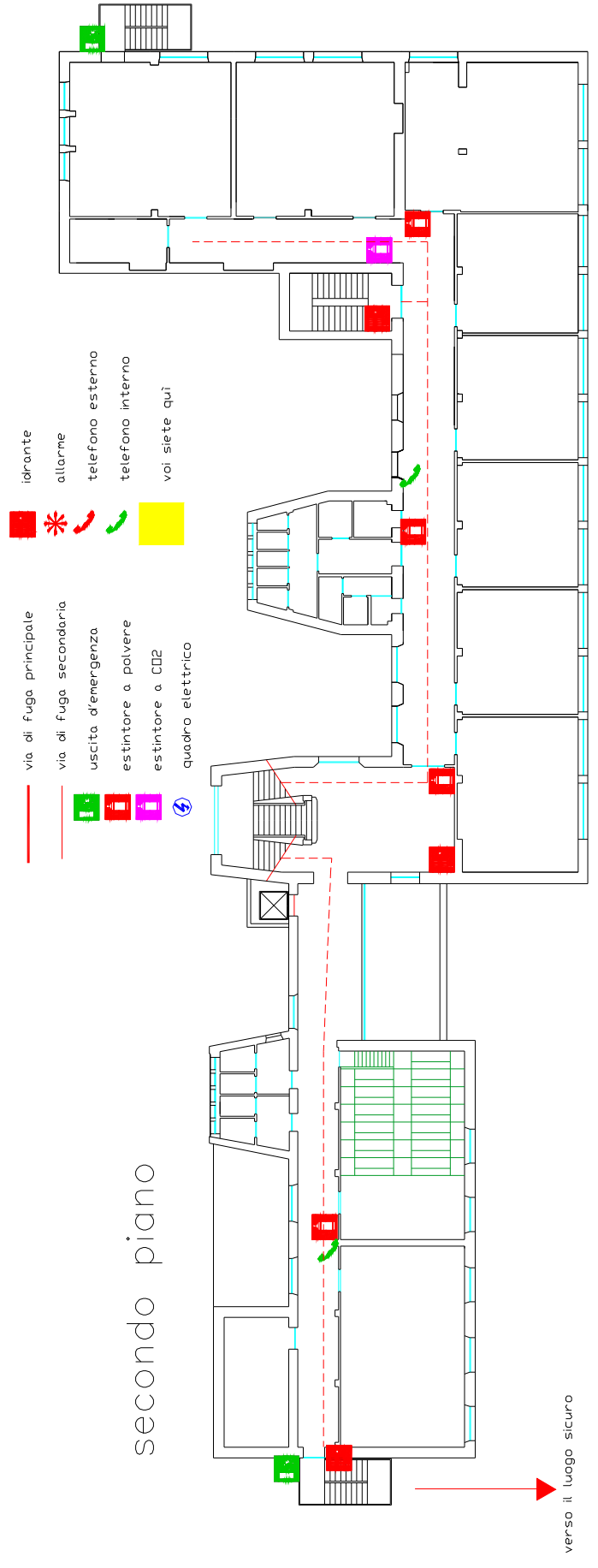


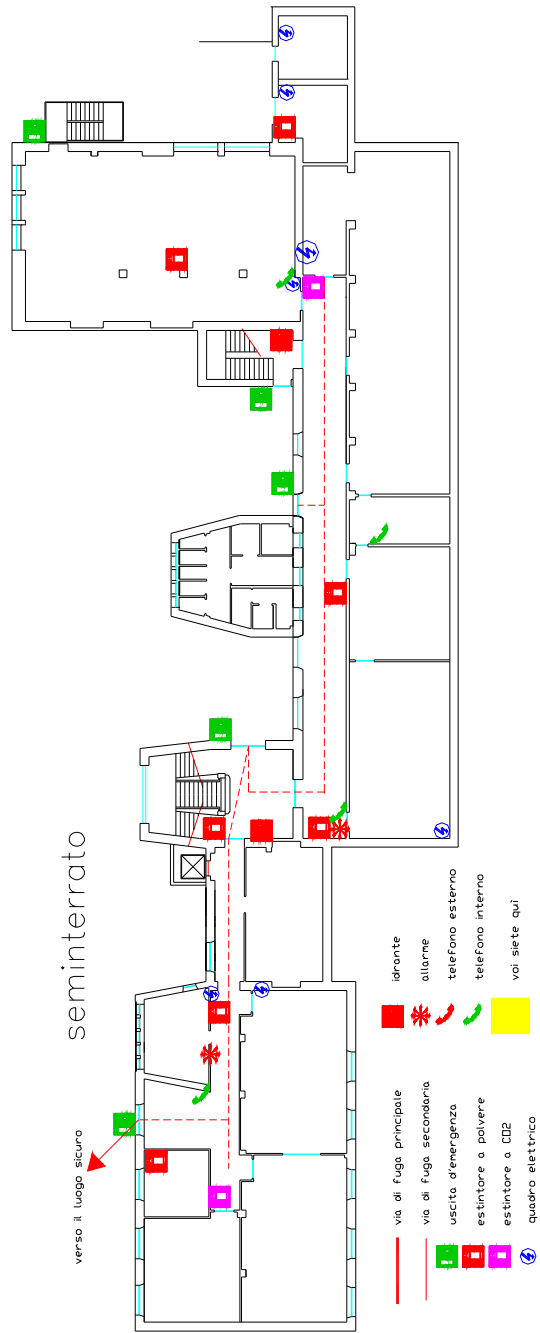
# primo piano

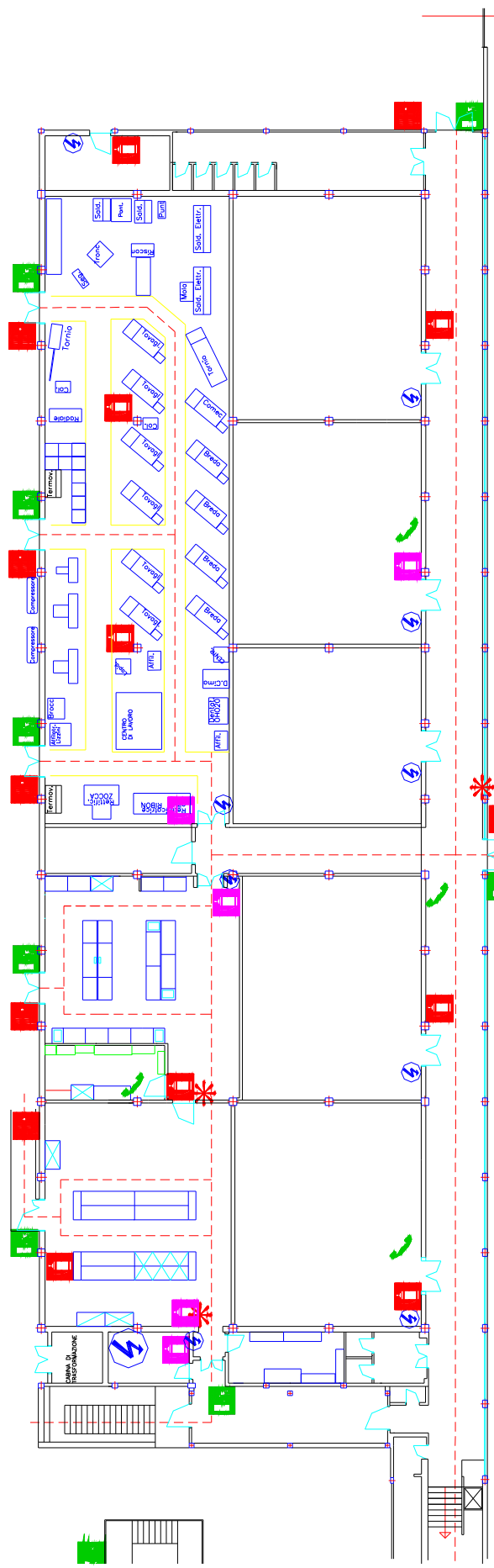












verso il luogo sicuro

# secondo piano







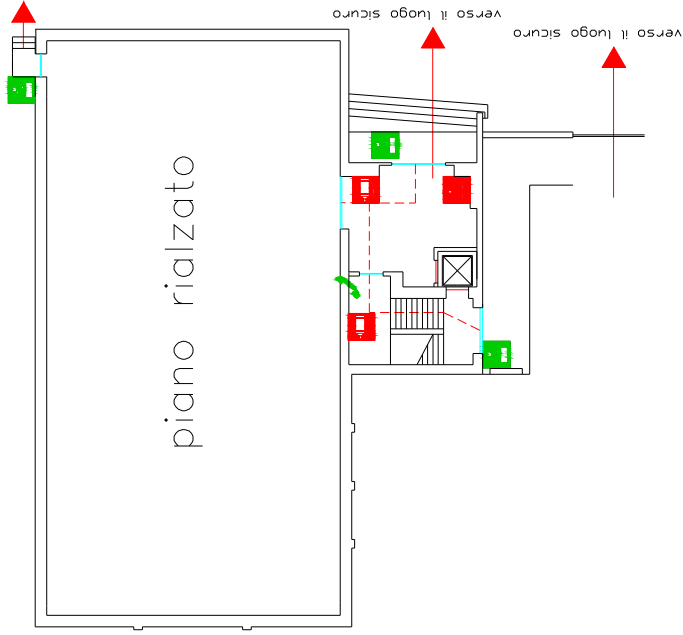
-  via di fuga principale
-  via di fuga secondaria
-  uscita d'emergenza
-  estintore a polvere
-  estintore a CO2
-  quadro elettrico
-  idrante
-  allarme
-  telefono esterno
-  telefono interno
-  voi siete qui

verso il t

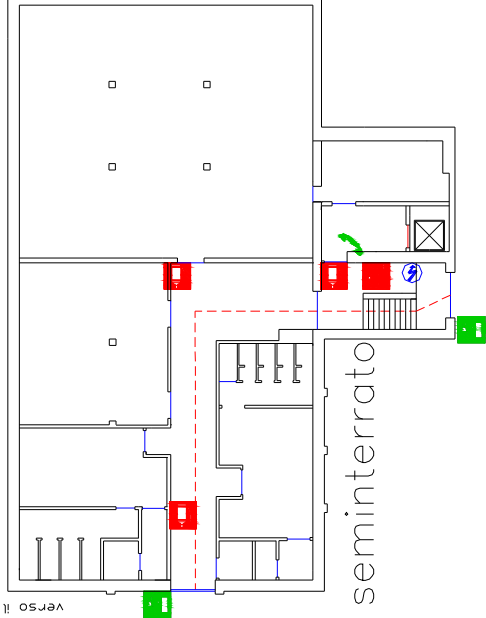
verso il luogo sicuro

# Paestra

## piano rialzato



## seminterrato



- via di fuga principale
  - via di fuga secondaria
  - uscita d'emergenza
  - estintore a polvere
  - estintore a CO2
  - quadro elettrico
- idrante
  - allarme
  - telefono esterno
  - telefono interno
  - voi siete qui

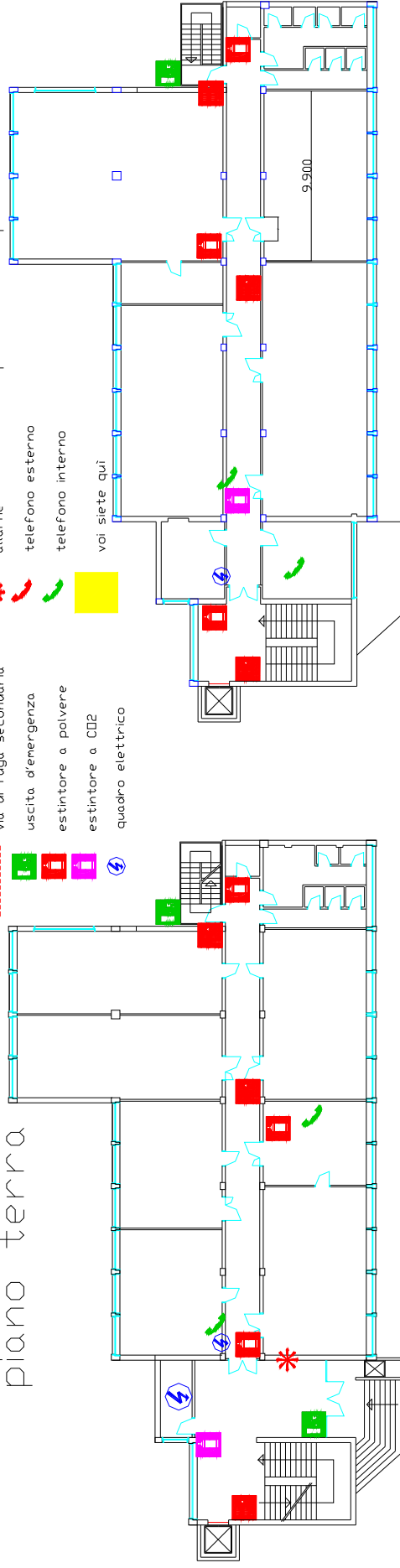
# Palazzina

- via di fuga principale
- via di fuga secondaria
- uscita d'emergenza
- estintore a polvere
- estintore a CO2
- quadro elettrico

piano terra

piano primo

- idrante
- allarme
- telefono esterno
- telefono interno
- voi siete qui



-  via di fuga principale
-  via di fuga secondaria
-  uscita d'emergenza
-  estintore a polvere
-  estintore a CO2
-  quadro elettrico

-  idrante
-  allarme
-  telefono esterno
-  telefono interno
-  voi siete qui

# MAGAZZINO

